

CERTIFIED LAND CORNER RECORDATION

DESCRIPTION OF CORNER EVIDENCE FOUND, AND ORIGINAL RECORD (if known)

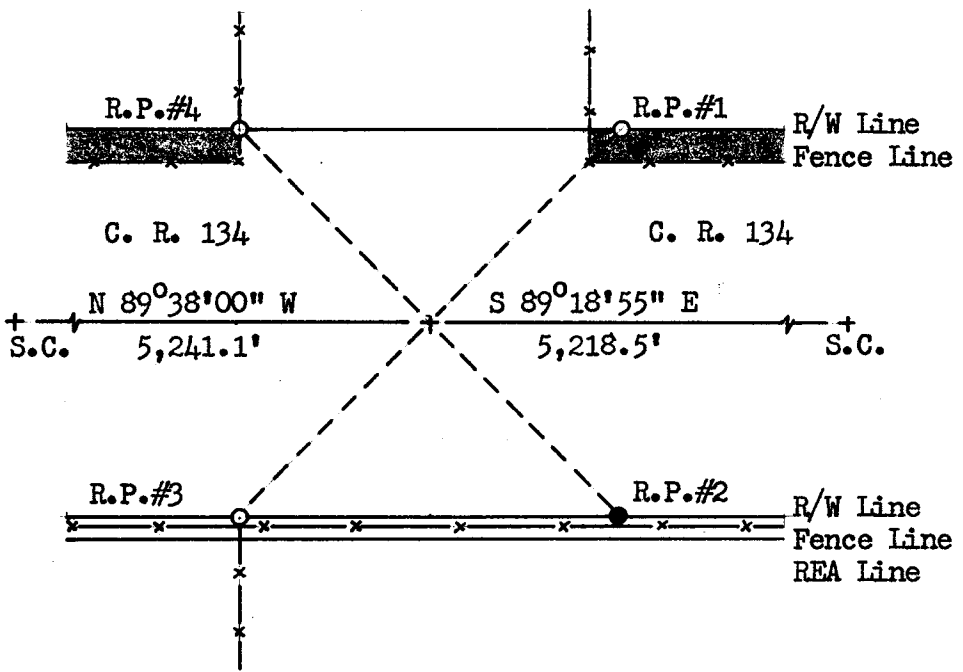
LOCATION  
S.28 S.27  
S.33 S.34  
T.16N., R.64W.  
6th P.M.

Obliterated corner. (G.L.O. record monument was found floating in borrow pit.)  
G.L.O. record: Quartz boulder, 17 x 8 x 6, Alfred M. Rogers, 1871.

DESCRIPTION OF MONUMENT AND ACCESSORIES ESTABLISHED TO PERPETUATE THE ORIGINAL LOCATION OF THIS CORNER:

At the corner: No monument set.  
Accessories: R.P.#1 - A 5/8" x 24" rebar w/ SurvKAP bears N 45°41' E, 56.57' distant.  
R.P.#2 - A 1 1/2" x 30" iron pipe w/ brass cap bears S 44°38' E, 56.57' distant. Set witness post, 1.5' east of R.P.#2.  
R.P.#3 - A 5/8" x 24" rebar w/ SurvKAP bears S 45°55'10" W, 56.57' distant.  
R.P.#4 - A 5/8" x 24" rebar w/ SurvKAP bears N 44°04'50" W, 56.57' distant.

SKETCH, WITH COURSE AND DISTANCE TO ADJACENT CORNER IF DETERMINED IN THIS SURVEY. (May Sketch or Paste Reproduction on Reverse Side.)



Brass cap set 6" above ground.  
Brass cap stamped:  
C. R. R/W  
LS 519 1972

Shaded areas denote encroachment.

I, R.L. Hudson certify that I have carefully performed or reviewed the work done on the diagrammed corner as reported on this recordation form and approve the same.

R.L. Hudson Wyoming L.S. No. 519  
Signature of Surveyor Registration No.

STATE OF WYOMING,  
Office of Clerk and Recorder,  
County of Laramie

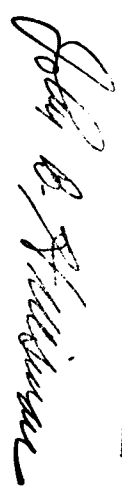
This "corner record" was filed for record on the 9th day of August, 1972, was noted on the cross-index plat and is assigned page No. 16-64, in book No. 985E.

Jolly B. Hillman  
County Official

Table with 4 columns: Cross Index No., T., R., Mer. with multiple rows for recording.

The State of Wyoming }  
County of Laramie } SS

This instrument was filed for record  
at 9:10 o'clock 9 M. on the  
24th day of August  
A. D. 19 22 and duly recorded in  
Book ..... on page .....



County Clerk & Ex-Officio Register of Deeds  
By....., Deputy